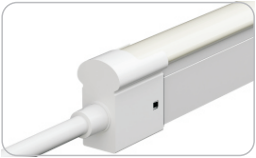
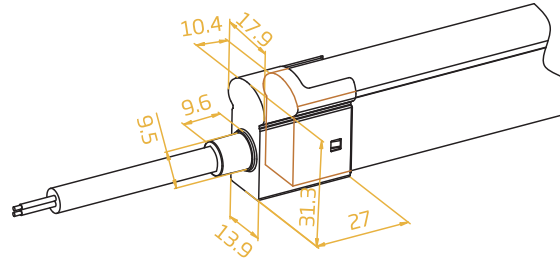


### Socket Front Connector



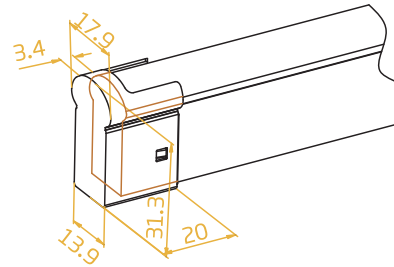
FXN - 1129 - C - SO - F



### Snap Front Connector-Side



FXN - 1129 - C - SO - FS



Note:

1. Unless otherwise stated, the tolerance of the connector is  $\pm 0.5\text{mm}$ .
2. To avoid damage from the excessive force on cable joint, please keep at least 60mm of cable ahead in the natural state.
3. Please refer to the Installation Guide about how to assemble the socket connector.